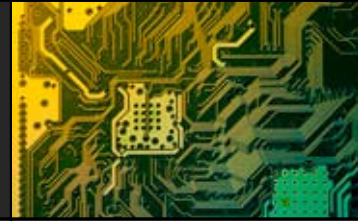


## Erin Cech

Doctoral Candidate

UCSD Department of Sociology



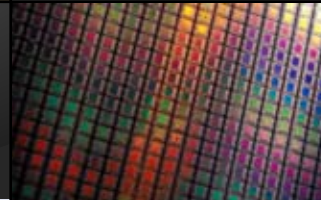
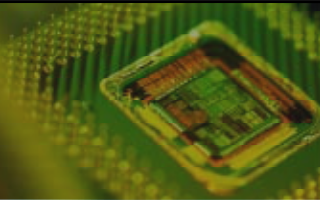
# “Where are all the Women in Science and Engineering?”

**Wednesday, April 13, 2011**

3:00 pm - 4:00 pm

Science & Engineering Library, Events Room

Geisel Library, Lower Level



**ABSTRACT:** Why are there so few women in science and engineering fields? Erin Cech, a doctoral candidate in Sociology at UCSD, will discuss the myths and the realities of women’s representation in STEM (science, technology, engineering and math) fields. Drawing on social science literature and her own research on inequality in STEM, Cech will provide an overview of several facets of this complicated issue: the retention of young women and girls in math and science education; gender issues in the transition from high school to college STEM majors and from college STEM majors to STEM careers; and gender inequities and work-family balance issues in the STEM workforce.

Erin Cech’s research examines sex segregation in science and engineering fields. Her dissertation explores gender inequality, analyzing how gender schemas and self-conceptions influence the career decisions of college students over time. Her other work examines the importance of professional culture in wage inequality, the work devotion of and perceptions of inequality among high-level professional women (with Mary Blair-Loy), and cross-national beliefs about work time for mothers (with Maria Charles). Erin is a member of two NSF-funded research groups: “FuturePaths” (with Carroll Seron, Susan Silbey, and Brian Rubineau), which examines the professional socialization and persistence of engineers; and a team exploring the gendered experiences of Native American students in Science and Engineering (with Anneke Metz and Jessi Smith). She earned bachelors degrees in Electrical Engineering and in Sociology from Montana State University.



***Please join us for this lecture and lively discussion to follow.***